

Welcome

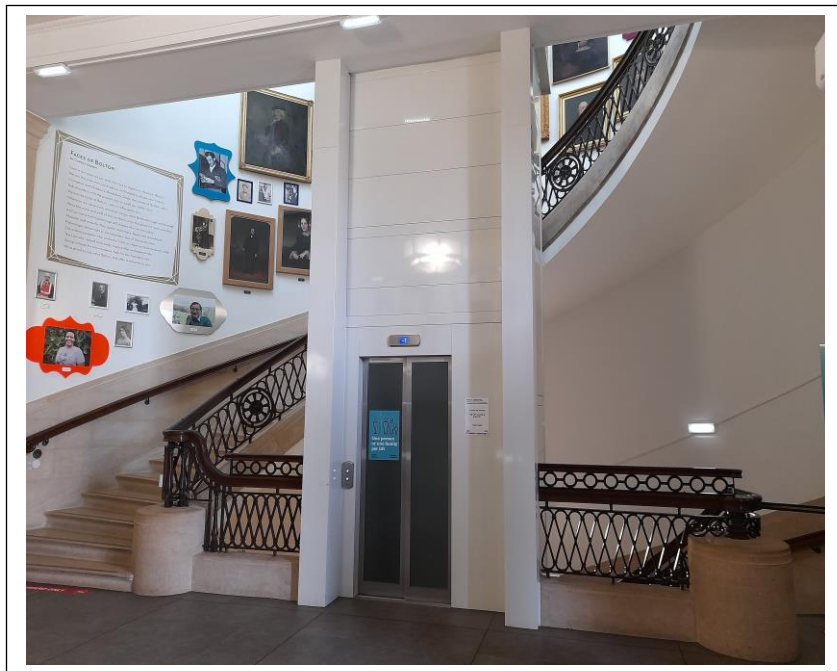
This picture guide will help you find your way around Bolton Museum.

My visit to Bolton Museum Aquarium

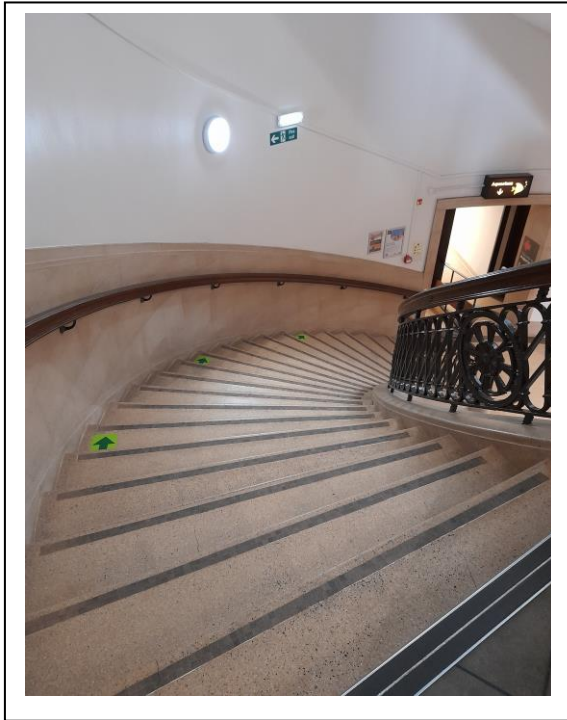


This is the outside of the library and museum building.

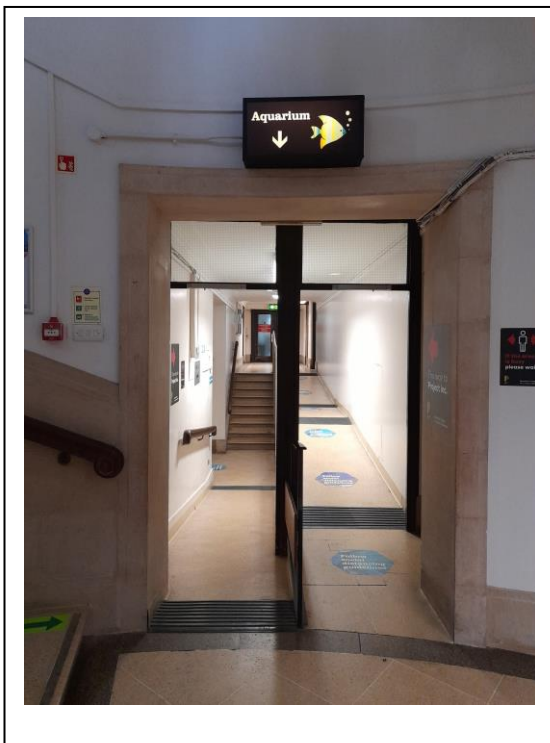
Arriving at the Library and Museum



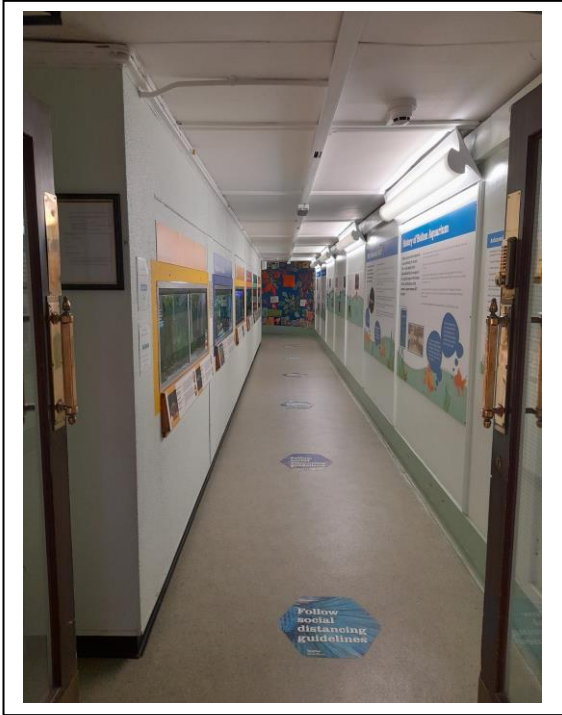
You can use the lift or the stairs to get to the aquarium in the basement.



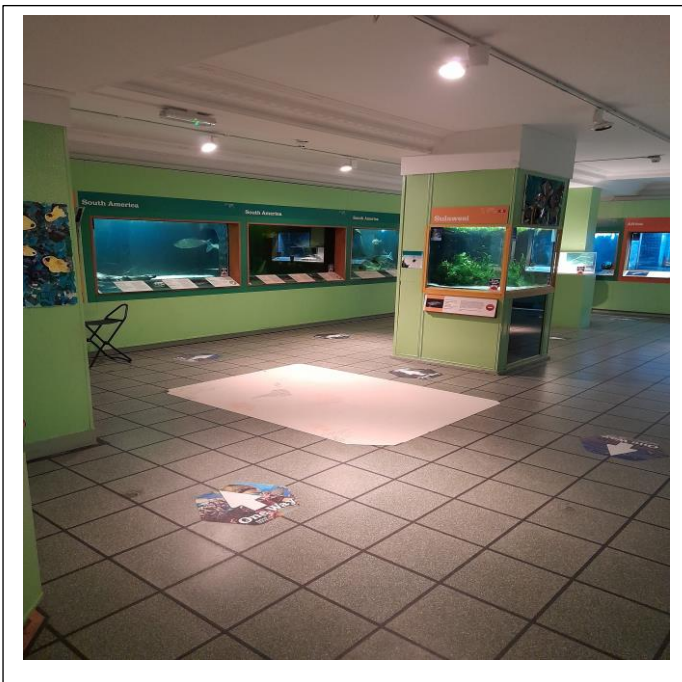
These stairs will take you down to the aquarium.



This corridor leads to the aquarium.



This is the entrance to the aquarium. There are tanks of fish on the left side that you can look at.



This is the aquarium. There are tanks with different types of fish in them.



You can look in all the fish tanks, but please don't touch the glass.

We hope that you will enjoy your visit to the aquarium.